

ThermTec

WILD Series
Thermal Imaging

Thermal Imaging Monocular Wild 650

Technical Specifications



ThermTec Technology Co., Ltd.
Email: info@thermeyertec.com
Website: <https://www.thermeyertec.com>



WILD 650

Key Features

- 640*512 thermal resolution, NETD \leq 18mk;
- Automatic object detection and AI distance measurement;
- 1x--4x continuous digital zoom;
- Various pseudo colors;
- Joystick control design, wheel focusing realises one-hand operation;
- Super large aperture offers better temperature radiation capturing capability;
- 1024*768 resolution with 0.39 inch OLED display;
- Up to 8h continuous working for lithium battery;
- Forest/Target outline mode

Applications

- Night hunting
- Observation
- Rescue operations
- Hiking and traveling

Specifications



Model	Wild650
Resolution	650x512
Pixel Pitch	12μm
NETD	18mk@300k
Spectral range	8-14μm
Frame rate	50HZ
Detection Range	2,600m
Optics	
Objective lens	50mm
Field of view	8.8° x 7.0°
Magnification	2.8X
Digital Zoom	1-4X continuous zoom
Eye relief	40mm
Exit pupil	6mm
Diopter	±5D
Display	
Type	AMOLED
Resolution	1024x768
Display size	0.39 inch
Color palette	6
Image mode	Forest/Target outline mode

Function	
Photo/video playback	Yes
Language	Multiple-languages
Built-in Memory	64GB
PIP	Yes
AI Distance Measurement	Yes
Heat Track	Yes
GPS	Yes
Real-time Notification	Yes
OSD Recording	Yes
EIS	Yes
Battery	
Internal battery	Replaceable and Rechargeable Li-ion Battery (18650x1)
Battery life	8h
Interface	
Type-C	Supports battery charging, data transfer, USB video output
Hotspot	Yes, App remote control
Environment	
Working temperature	-20°C—+50°C
Protection Level	IP67
Weight, g	550±5g
Size, mm	190.2(L)x76.3(W)x65.6(H)
Accessories	
External Cable	USB cable
Other Accessories	Palm strap/Protective bag/Non-dust cloth and etc.

Accessories



Monocular (x1)



USB cable (x1)



Charger (X1)



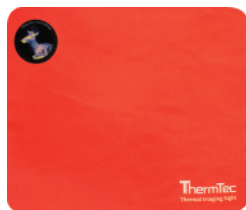
Lanyard(x1)



Hand strap (x1)



Lithium battery (X2)



Lens cloth (x1)



User manual (x1)

Dimension

Unit: mm

